



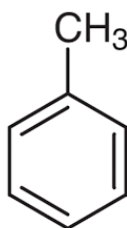
## Certificate of Analysis.

### Toluene, for GC-HS, ChromSolv<sup>®</sup>.

Product Code:	<b>BS10257.</b>
Description:	<b>Toluene, for GC-HS, ChromSolv<sup>®</sup>.</b>
Chemical Name:	<b>Methylbenzene.</b>
Pack Size:	<b>1 lit.</b>
CAS NO.:	<b>108-88-3.</b>
Mol. Weight:	<b>92.14 g/mol.</b>
Mol. Formula:	<b>C<sub>7</sub>H<sub>8</sub>.</b>
MDL Number:	<b>MFCD00214201.</b>
Solubility:	<b>Soluble in chloroform.</b>
Density:	<b>0.87 g/mL.</b>
Melting Point:	<b>-95°C.</b>
Boiling Point:	<b>111°C.</b>
Storage:	<b>Store at Ambient temperature.</b>
LOT NO.:	<b>Sample.</b>
Manufacture Date:	<b>Lot specific.</b>
Expiry Date:	<b>5 years.</b>

Characteristics	Specification	Measured Values
Appearance:	<b>Clear colorless liquid.</b>	<b>Lot specific.</b>
Non-volatile matter:	<b>Max. 0.0005 %.</b>	<b>Lot specific.</b>
Water (KF):	<b>Max. 0.02 %.</b>	<b>Lot specific.</b>
Purity GC:	<b>Min. 99.80 %.</b>	<b>Lot specific.</b>

Please Note: - This material is only for laboratory purpose and not for human consumption. This is a computer-generated COA, no stamp or signature is required




**Dr. K. Deepti.**  
**Technical Head.**

